

Rates

Table with columns: Instrumento, TNA, and dates. Includes Caución 7d, Caución 30d, BADLAR Priv. (>\$1mm), TM20 Priv. (>\$20mm), and TPM - Leliga 7D.

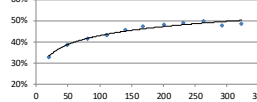
BCRAA3500 USD \$74,835

Table with columns: Days, %Change, and Annualized. Shows data for 7d, 31d, 61d, 92d, 184d, and 366d.

Rofex - ARS-USD Futures

Table with columns: Futures, Maturity, Days, USD, Rates, -d1, Ch, Op. I. Lists various futures contracts like SPOT, DLR09202, etc.

Rofex Futures implicit rates



ARS - USD

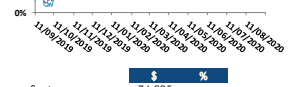
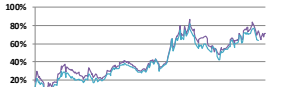
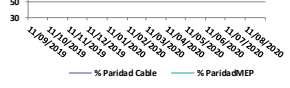
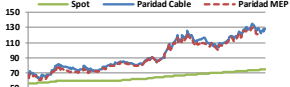


Table with columns: Spot, Paridad Cable, Paridad MEP, and values in \$ and %.

Bonds

Table with columns: Bond, Code, Amt Out., Coupon, Price, YTM, MD, Maturity. Lists various bonds like Sovereign Bond Inflation Indexed, Bancer 04-21, etc.

Table with columns: Bond, Code, Amt Out., Coupon, Price, YTM, MD, Maturity. Lists various bonds like Bancer Ago 21, Bancer 21, etc.

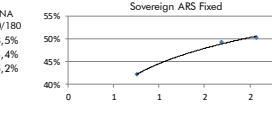
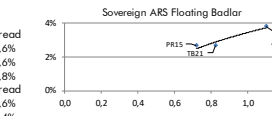
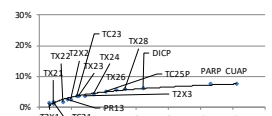
Table with columns: Bond, Code, Amt Out., Coupon, Price, YTM, MD, Maturity. Lists various bonds like Dual Linked, Gillo AF20, etc.

Table with columns: Bond, Code, Amt Out., Coupon, Price, YTM, MD, Maturity. Lists various bonds like Ledas ARS, S3050, etc.

Table with columns: Ledas ARS, Days, Amt Out., BP +, Price, Spread, MD, Maturity. Lists various bonds like S1850, S2200, etc.

Table with columns: Sovereign ARS Floating Badlar, Ledcaps ARS, S311D, Days, Amt Out., Coupon, Price, TIR, MD, Maturity.

** Compounded monthly



Bonds

Table with columns: Bond, Code, Amt Out., Coupon, Price, YTM, MD, Maturity. Lists various bonds like Sovereign ext. law USD (1), Bonos Int. 21 NYL, etc.

Table with columns: Bond, Code, Amt Out., Coupon, Price, YTM, MD, Maturity. Lists various bonds like Sovereign Arg. law USD (1), Bonar 20, etc.

Table with columns: Sub-Sovereign USD (3), Code, Amt Out., Coupon, Price, YTM, MD, Maturity. Lists various bonds like Bs. As. 21 NYL, CABA, etc.

Table with columns: Sub-Sovereign USD (3), Code, Amt Out., Coupon, Price, YTM, MD, Maturity. Lists various bonds like CABA, Bs. As. 23 NYL, etc.

Table with columns: Sub-Sovereign USD (3), Code, Amt Out., Coupon, Price, YTM, MD, Maturity. Lists various bonds like CABA, Bs. As. 24 NYL, etc.

Table with columns: Sub-Sovereign USD (3), Code, Amt Out., Coupon, Price, YTM, MD, Maturity. Lists various bonds like CABA, Bs. As. 28 NYL, etc.

Table with columns: Corporate USD*, Code, Amt Out., Coupon, Price, YTM, MD, Maturity. Lists various bonds like Pan Am 2021, Hipotecario 2020, etc.

Table with columns: Corporate USD*, Code, Amt Out., Coupon, Price, YTM, MD, Maturity. Lists various bonds like Telecom 2021**, Transener 2021**, etc.

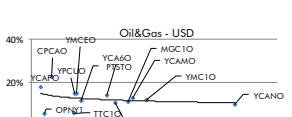
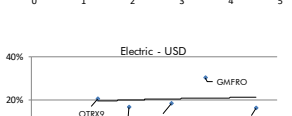
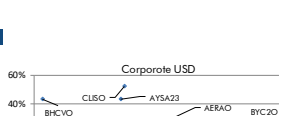
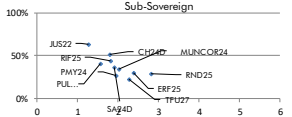
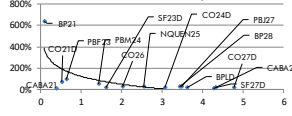
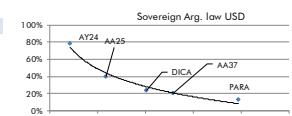
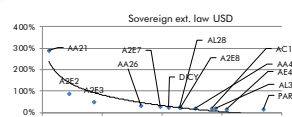
Table with columns: Corporate USD*, Code, Amt Out., Coupon, Price, YTM, MD, Maturity. Lists various bonds like Arcor 2023**, AES Arg. G. 2024**, etc.

Table with columns: Corporate USD*, Code, Amt Out., Coupon, Price, YTM, MD, Maturity. Lists various bonds like YPF 2024, YPF 03-2025, etc.

Table with columns: Corporate USD*, Code, Amt Out., Coupon, Price, YTM, MD, Maturity. Lists various bonds like Pampa 2025**, Arcor 2023**, etc.

** Dirty Price

** Callable Bond - Yield to Maturity



El presente documento ha sido realizado por Argenfunds S.A. con fines estrictamente informativos. No debe ser tomado como una invitación a suscribir cutupartes ni como una oferta de compra o venta de valores. El documento se ha realizado con fuentes de información consideradas confiables, pero la empresa no puede garantizar la exactitud de las mismas. Los fondos comunes de inversión están sometidos a variaciones en los precios de los activos que pueden afectar su rendimiento. Los rendimientos pasados de los fondos comunes de inversión no garantizan el desempeño futuro de los mismos. Las inversiones en cutupartes del Fondo no constituyen depósitos en Banco Macro S.A. a los fines de la Ley de Entidades Financieras ni cuentan con ninguna de las garantías que tales depósitos a la vista o a plazo pueden gozar de acuerdo con la legislación y reglamentación aplicables en materia de depósitos en entidades financieras. Asimismo, Banco Macro S.A. se encuentra impedida por normas del Banco Central de la República Argentina de asumir, tácita o expresamente, compromiso alguno en cuanto al mantenimiento, en cualquier momento, del valor del capital invertido, al rendimiento, al valor del rescate de la cuota partes o al otorgamiento de liquidez a tal fin. Gráficos de Elaboración propia. Fuentes Rofex CAFCA y Bolsar